



## SAILING INSTRUCTIONS

### INTERNATIONAL SIX METRE CLASS WORLD CHAMPIONSHIP

Thursday 28th May to Friday 5th June 2015

The Société Nautique de La Trinité sur Mer (SNT),  
acting as Organizing Authority (OA)

In conjunction with

the International Six Metre Association (ISMA)  
and Union Française des 6 Mètre JI

#### 1. RULES

The rules as defined in the latest Racing Rules of Sailing (RRS).

RRS will be changed as follows:

RRS 44.1 and 44.2 will be changed so that only one turn, including one tack and one gybe is required.

The ISAF Sailor Classification Code (Regulation 22) will not apply.

1.2 The Equipment Rules of Sailing (ERS).

1.3 The International Six Metre World Championship Trophies Deed of Gift.

1.4 The International Six Metre Class Rating Rules.

1.5 The relevant FFVoile (French Sailing Federation) prescriptions are stated in the NoR (Notice of Race). Other FFVoile prescriptions do not apply.

1.6 The Organizing Authority's Notice of Race and Sailing Instructions as approved by ISMA.

1.7 All yachts may register one alternative crew on their crew list and may use this crew by registering the change by 19.00 at the Regatta Office on the day before the crew change is to take place.

1.8 All yachts must carry on board a towline of minimum 15 metre length and personal flotation devices for every crew member on board.

1.9 If there is a conflict between languages the English text will take precedence.

#### 2 NOTICES TO COMPETITORS

**Notices to competitors will be posted on the official notice board located at the entrance to the Marquee.**

### 3 CHANGES TO SAILING INSTRUCTIONS

Any change to the sailing instructions will be posted before 09:00 on the day it will take effect, **except that any change to the schedule of races will be posted by 20:00 on the day before it will take effect.**

### 4 SIGNALS MADE ASHORE

4.1 Signals made ashore will be displayed on the flagpole which is the closest to the Marquee, with the “SNT” Flag

4.2 When flag AP is displayed ashore, ‘1 minute’ is replaced with ‘not less than 90 minutes’ in the race signal AP. This changes Race Signals.

4.3 When flag Y is displayed ashore, rule 40 applies at all times while afloat. This changes the Part 4 preamble

### 5 PROGRAMME AND RACE SCHEDULE

#### 5.1 Racing programme

Day 1: Thursday May 28th                      Registration and measurement (from 0900 to 1200 and 1400 to 1800)

Day 2: Friday May 29th                        Registration and measurement (from 0900 to 1200 and 1400 to 1800)

#### REGATE ANNUELLE EN MER OF THE SOCIETE NAUTIQUE DE GENEVE

Day 3: Saturday May 30th                      Registration and measurement (from 0900 to 1200)  
2 Races

Day 4: Sunday May 31st                        2 Races  
Prize giving

#### INTERNATIONAL SIX METRE CLASS WORLD CHAMPIONSHIP

Day 5: Monday June 1st                        Racing (Day 1)

Day 6: Tuesday June 2nd                      Racing (Day 2)

Day 7: Wednesday June 3rd                    Racing (Day 3)

Day 8: Thursday June 4th                      Racing (Day 4)

Day 9: Friday June 5th                        Reserve day (Day 5)  
Prize-giving

5.2 The scheduled time of the warning signal for the first race each day is 10:55 for the International Six Metre Class World Championship..

- 5.3 Number of races: A maximum of eight (8) races will be sailed with respect to the International Six Metre Championship Deed of Gift. Five (5) races shall be completed to constitute a valid championship.

Two races will be scheduled for any day; however a third race may be sailed on any of the first four scheduled days of racing if required to maintain the schedule in the event of adverse weather conditions and the change is made according to instruction SI 3.

- 5.4 The last day (Friday June 5<sup>th</sup> 2015) of the International Six Metre World Championship, no warning signal will be made after 1200.
- 5.5 To alert boats that a race or sequence of races will begin soon, the orange starting line flag will be displayed with one sound at least five minutes before a warning signal is made.

## 6 CLASS FLAGS & IDENTIFICATION

The class flag will be the International 6 Metre class burgee with the pennant of the Division hereafter defined.

Both regattas will be sailed in two divisions.

Open Division: **yellow pennant.** The Open Division is open to any yacht having a valid certificate of rating as an International Six Metre, except that yachts rated in accordance with the International Six Metre Class Rule Appendix A, with a certificate endorsed 'Classic', may not compete in the Open Division.

Classic Division: **blue pennant.** The Classic Division is open to all yachts having a valid certificate of rating as an International Six Metre, and first constructed and/or certificated before 31 December 1965. Replicas of such yachts whose construction has been endorsed by ISMA's Technical and Classics Committees are also eligible to compete in the Classic Division.

## 7 RACING AREA

- 7.1 Appendix A shows the location of the racing area.
- 7.2 The Race Committee Boats will display the SNT pennant.
- 7.3 VHF channel 71 or 73 In case of VHF channel 71 malfunction

## 8 THE COURSES

- 8.1 There shall be 2 courses as follows in accordance with the Deed of Gift :

Course A : 3 windward legs and 2 leeward legs of approximately 2 nautical miles each;

Course B : 2 windward legs and 2 leeward legs of approximately 2 nautical miles each, with a finish at the leeward mark. Course B shall normally be used when another race is scheduled for the same day.

The Organizing Authority may, with the approval of ISMA, use modified courses to suit local conditions.

A gate may be laid as the Leeward Mark.

Mark 3 will be a gate 3a and 3b.

8.2 The diagrams in appendix B show the courses, including the approximate angles between legs, the order in which marks are to be passed, and the side on which each mark is to be left. The course length, at the discretion of the Race Officer, may be altered to reflect the prevailing weather conditions.

8.3 No later than the warning signal, the race committee signal boat will display the approximate compass bearing of the first leg.

## 9 MARKS

9.1 Marks 1, 2, 3 a and 3 b, will be yellow cylindrical buoys.

9.2 New marks, as provided in instruction 12.1, will be orange cylindrical buoy.

## 10 AREAS THAT ARE OBSTRUCTIONS

There are no obstructions in the racing area.

However, competitors are reminded that there is a risk of danger close to the coast. The Latéral mark «Petit Trého» and the West Cardinal «Roche Révision» shall be left on their required sides.

## 11 THE START

In the first race each day, the Classic Division will start 5 minutes after the Open Division, and the warning signal for the Classic Division will be made at the same time as the starting signal for the Open Division. In second and subsequent starts of the day the order of starting and the interval between starts may be changed at the discretion of the race officer, but the interval between starts will never be less than 5 minutes and may be greater if the Classic Division starts first.

11.1 Races will be started by using rule 26 with the warning signal made 5 minutes before the starting signal.

11.2 The starting line will be between a staff displaying an orange flag on the signal vessel at the starboard end and an orange flag on a staff at the port end.

11.3 A boat starting later than 4 minutes after her starting signal will be scored Did Not Start without a hearing. This changes rule A4.

11.4 If flag U has been displayed as the preparatory signal, no part of a boat's hull, crew, or equipment shall be in the triangle formed by the ends of the starting line and the first mark during the last minute before her starting signal. If a boat breaks this rule and is identified, she shall be disqualified without a hearing but not if the race is restarted or resailed or postponed or abandoned before the starting signal. This changes rule 26

11.5 In accordance with RRS 29.1, when boats have been identified as being OCS, the Race Committee boat will display Flag X accompanied by one sound signal. In addition, the Race Committee will transmit a list of all OCS boats by VHF. The list will be transmitted twice. The first transmission not any earlier than 1 minute after the start and the second transmission no later than 3 minutes after the start. Within this time window, the specific timing of the transmission and the order in which numbers are called will not be grounds for a request for redress. Neither failure of VHF radio nor poor radio reception conditions will be grounds for a request for redress. Notwithstanding this sailing instruction, boats are reminded that it is their own responsibility to judge whether they are OCS and to return accordingly.

## 12 CHANGE OF THE NEXT LEG OF THE COURSE

- 12.1 To change the next leg of the course, the race committee will lay a new mark or move the finishing line and remove the original mark as soon as practicable. When in a subsequent change a new mark is replaced, it will be replaced by an original mark.
- 12.2 Except at a gate, boats shall pass between the race committee boat signaling the change of the next leg and the nearby mark, leaving the mark to port and the race committee boat to starboard. This changes rule 28.

## 13 THE FINISH

The finishing line for Course A is between the staff of the Committee vessel displaying an orange flag and the cylindrical orange buoy windward of mark 1.

The finishing line for Course B is between the staff of the Committee vessel displaying an orange flag and mark 3a.

## 14 PENALTY SYSTEM

- 14.1 Rule 44.1 is changed so that the Two-Turns Penalty is replaced by the One-Turn Penalty as indicated in the NoR.
- 14.2 A boat that has taken a penalty or retired under RRS 44.1 shall complete an acknowledgement form at the race office within the protest time limit.

## 15 TIME LIMITS AND TARGET TIMES

- 15.1 There shall be a time limit of 2 hours and a half for each race. If no boat has passed mark 1 within 1 hour the race will be abandoned. This changes RRS 62.1(a).
- 15.2 There shall be a time limit of 50 minutes for Modern yachts and 55 minutes for Classic yachts to complete each leg. The time will be measured as the elapsed time between the first rounding by any yachts of the two marks defining a leg. All yachts finishing the race within the prescribed time or within one hour after the first yacht to finish shall be scored. All others shall be scored DNF (Did not finish) without a hearing. This changes rules 35, A4 and A5.

## 16 PROTESTS AND REQUESTS FOR REDRESS

- 16.1 **Protest forms are available at the SNT Clubhouse. Protests and requests for redress or reopening shall be delivered there within the appropriate time limit.**
- 16.2 The protest time limit is 90 minutes after the last boat has finished the last race of the day or the race committee signals no more racing today, whichever is later.
- 16.3 Notices will be posted **on the official notice board located at the entrance to the Marquee and repeated on the board by the SNT Clubhouse** no later than 30 minutes after the protest time limit to inform competitors of hearings in which they are parties or named as witnesses. Hearings will be held in the protest room, located at the SNT Club House, beginning at the time posted.

- 16.4 Notices of protests by the race committee or International Jury will be posted to inform boats under rule 61.1(b) on the official notice board (at the Marquee).
- 16.5 Breaches of instructions 14.2, 18, 21, 23, 25, 26 and 27 will not be grounds for a protest by a boat. This changes rule 60.1(a). Penalties for these breaches may be less than disqualification if the International Jury so decides.
- 16.6 On the last scheduled day of racing a request for reopening a hearing shall be delivered
- (a) within the protest time limit if the requesting party was informed of the decision on the previous day;
  - (b) no later than 30 minutes after the requesting party was informed of the decision on that day. This changes rule 66.
- 16.7 On the last scheduled day of racing a request for redress based on a decision of the International Jury shall be delivered no later than 30 minutes after the decision was posted. This changes rule 62.2.
- 16.8 Decisions of the International Jury will be final as provided in RRS 70.5.

## 17 SCORING

- 17.1 The scoring system is the low point system In Appendix A as modified in 17.2(a)
- 17.2 Five races are required to be completed to constitute a valid championship.
- (a) When fewer than 6 races have been completed, a boat's series score will be the total of her race scores.
  - (b) When from 6 to 8 races have been completed, a boat's series score will be the total of her race scores excluding her worst score.

## 18 SAFETY REGULATIONS

A boat that retires from a race shall notify the race committee as soon as possible.

## 19 REPLACEMENT OF CREW OR EQUIPMENT

- 19.1 Any crew changes other than those permitted by 1.7 shall be subject to approval by the International Jury. A reason for the change must be given.
- 19.2 Substitution of damaged or lost equipment will not be allowed unless authorized by the race committee. Requests for substitution shall be made to the committee at the first reasonable opportunity.

## 20 EQUIPMENT AND MEASUREMENT CHECKS

A boat or equipment may be inspected at any time for compliance with the class rules and sailing instructions. On the water, a boat can be instructed by a race committee member to proceed immediately to a designated area for inspection.

## 21 EVENT ADVERTISING

Boats shall display event advertising that may be supplied by the organizing authority. In accordance with the Class Rules 36, no advertising is allowed on the main sail or genoa.

## 22 OFFICIAL BOATS

Official boats of the Committee will be marked with “SNT” flags.

## 23 SUPPORT BOATS

23.1 Team leaders, coaches and other support personnel shall stay outside areas where boats are racing from the time of the preparatory signal for the first class to start until all boats have finished or retired or the race committee signals a postponement, general recall or abandonment.

23.2 6MR Support boats shall be marked with an orange pennant that shall be displayed throughout the regatta. This flag can be obtained from the Regatta Office during registration.

Other Support boats (Press, photographer, video...) shall be marked with a mauve pennant.

## 24 TRASH DISPOSAL

RRS 55 is modified by adding the sentence : ” 'However, discarding elastic or wool bands when setting a sail will not be considered a breach of rule 55”

The penalty for breaking rule 55 may be less than disqualification if the International Jury so decides.

## 25 HAUL-OUT RESTRICTIONS

Boats shall not be hauled out during the regatta except with and according to the terms of prior written permission of the race committee.

## 26 DIVING EQUIPMENT AND PLASTIC POOLS

Underwater breathing apparatus and plastic pools or their equivalent shall not be used around boats between the preparatory signal of the first race and the end of the regatta, i.e. the International 6M World Championship.

## 27 RADIO COMMUNICATION

Except in an emergency, a boat shall neither make radio transmissions while racing nor receive radio communications not available to all boats. This restriction also applies to mobile telephones.

## 28 PRIZES

Prizes will be given as described in the Notice of Race. In addition to the Trophies listed in the NoR, souvenir gifts will be given to crews and special prizes may be awarded thanks to our partners.

## 29 DISCLAIMER OF LIABILITY

Competitors participate in the regatta entirely at their own risk. RRS 4, Decision to Race. The organizing authority will not accept any liability for material damage or personal injury or death sustained in conjunction with or prior to, during, or after the regatta.

## 30 INSURANCE

Each participating boat shall be insured with valid third-party liability insurance with a minimum cover of € 1 500 000 or the equivalent.

## 31 RACE OFFICIAL TEAM

Race Officer : Gilles Bricout

International Jury :

International Jury:

Helmut JAKOBOWITZ IJ-AUT - Chairman

Liz PROCTER IJ-GBR

Robert MILNER IJ-GBR

Tony O'GORMAN IJ-IRL

Claude PETIT NJ-FRA

## 32 TIDE TABLES ( Port-Navalo )

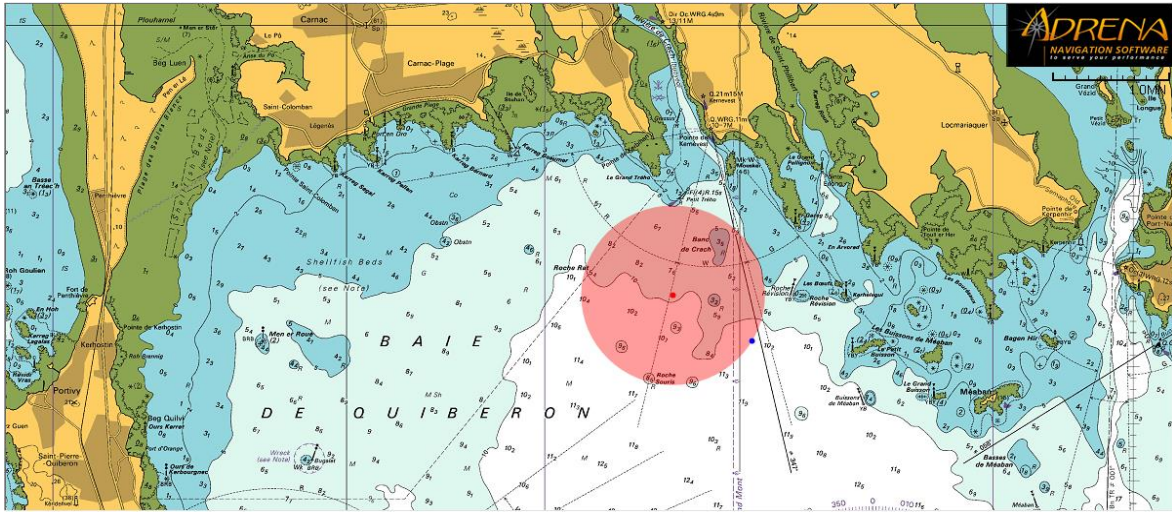
	HT	Height	Tidal Range	HT	Height.	Tidal Range	LT	Height	LT	Haut
29/05/2015	02h55	4.05	49	15h21	4.20	53	09h03	1.75	21h21	1.75
30/05/2015	03h42	4.20	57	16h01	4.40	62	09h49	1.55	22h05	1.50
31/05/2015	04h21	4.40	66	16h37	4.55	70	10h29	1.35	22h47	1.30
01/06/2015	04h58	4.55	75	17h13	4.75	78	11h08	1.20	23h26	1.15
02/06/2015	05h35	4.65	81	17h50	4.85	84	11h46	1.05	----	---
03/06/2015	06h13	4.75	86	18h29	4.95	88	00h06	1.00	12h24	0.95
04/06/2015	06h51	4.80	89	19h10	4.95	89	00h46	0.85	13h03	0.95
05/06/2015	07h31	4.75	88	19h53	4.90	87	01h27	0.80	13h45	0.95

HT = high tide

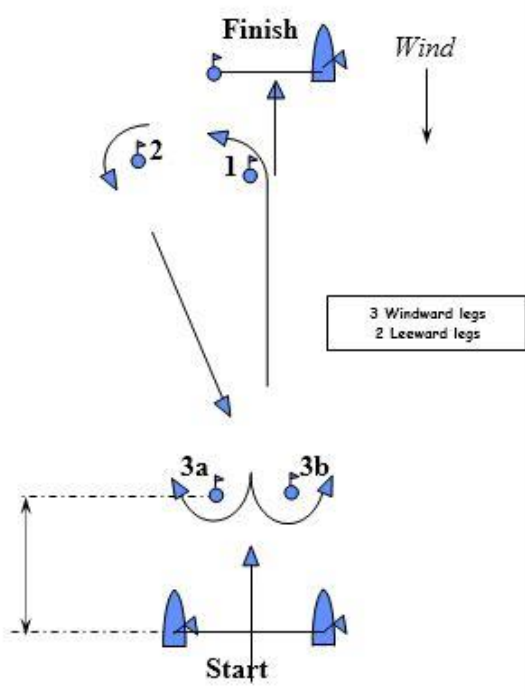
LT = low tide



# APPENDIX A : RACING AREA



Appendix B - Course A



Appendix B - Course B

